



# TRANSFORMING AND BUILDING STRATEGIC WORKFORCE

- ▶ Multiple Identity Management
- ▶ Roles & Skill Optimization
- ▶ Cost Control
- ▶ Time Management
- ▶ AHALTS
- ▶ Activity Management

# HEADQUARTERS IN JAIPUR

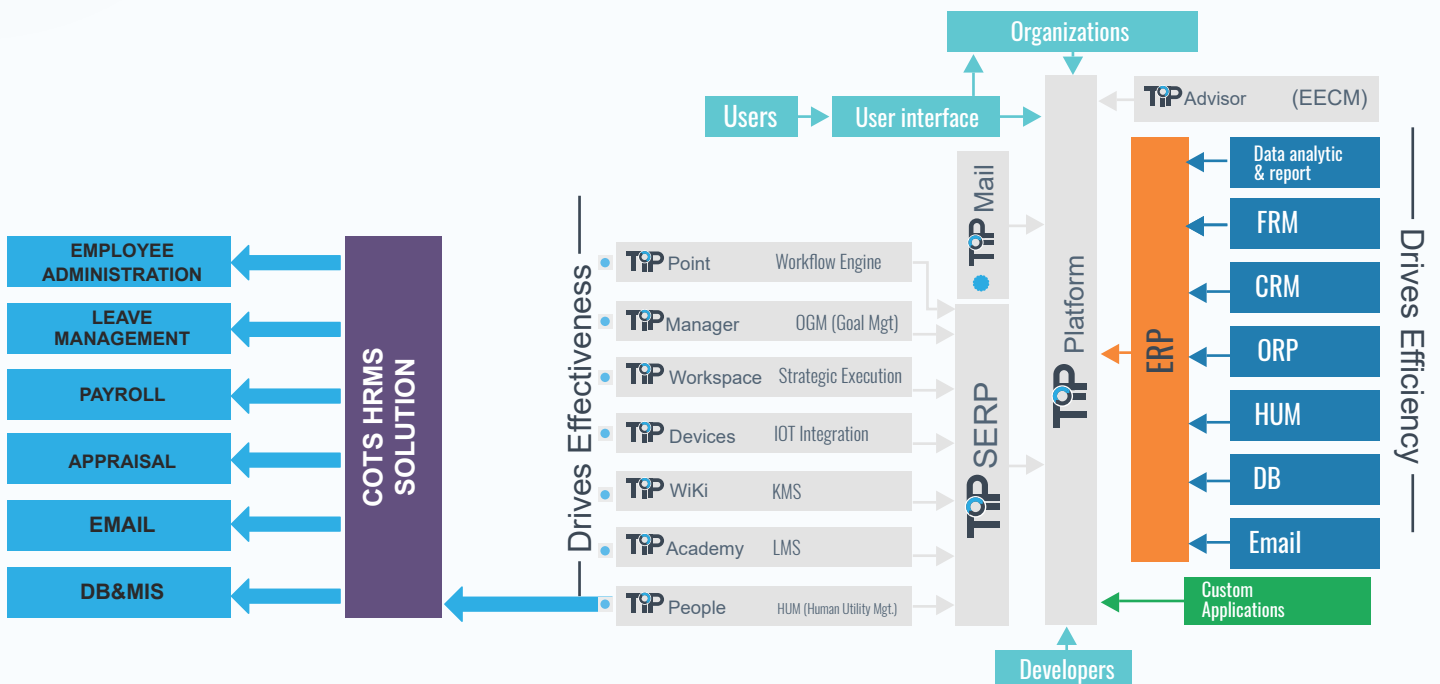


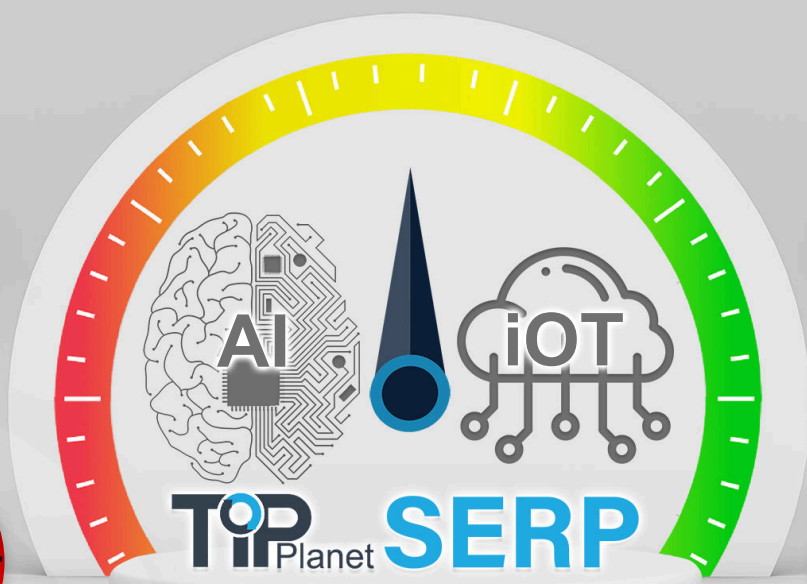
Tip Top Platform is an outcome of 18 years of research in Service Industry primarily focusing on getting effectiveness through development of **Business + IT unification platform** that gets effectiveness in **Human Utility Management**

We are the innovators of 5<sup>th</sup> generation AI driven Business and Workforce Management Platform with its patented '**SERP**' (Service Effectiveness Resource Planning) solution

In simple words "It's a People's Effectiveness Management Solution along with The Assets and Humans can be tracked using our most advanced **AHALTS** service to track (Asset & Human in relation to location and Time) the main highlights of this service are, Touch less attendance using their Facial recognition devices that recognize the body temperature and mask on, Anywhere attendance using our mobile App which has an inbuilt (**AHALTS**)

## TIPTOP ECO SYSTEM





### 5th GEN. WORKLOAD BALANCER



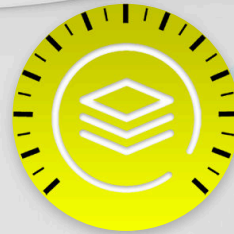
Multi-dimensional Organisation Charts



Cost Control



Roaster Settings



Activity Management



Roles & Skills Optimization

## TIP Planet AHALTS



Touchless Biometric Security (Reduces Germ Spreading)



FACIAL RECOGNITION



WIDE ANGLE



RECOGNITION WITH MASK



ARTIFICIAL INTELLIGENCE



BODY TEMPERATURE DETECTION



Access Control Solutions



FACIAL RECOGNITION BASED CONTROL



INSTANT ACCESS IN JUST 0.3 SECONDS



BODY TEMPERATURE DETECTION



CCTV Surveillance and Thermal Scan

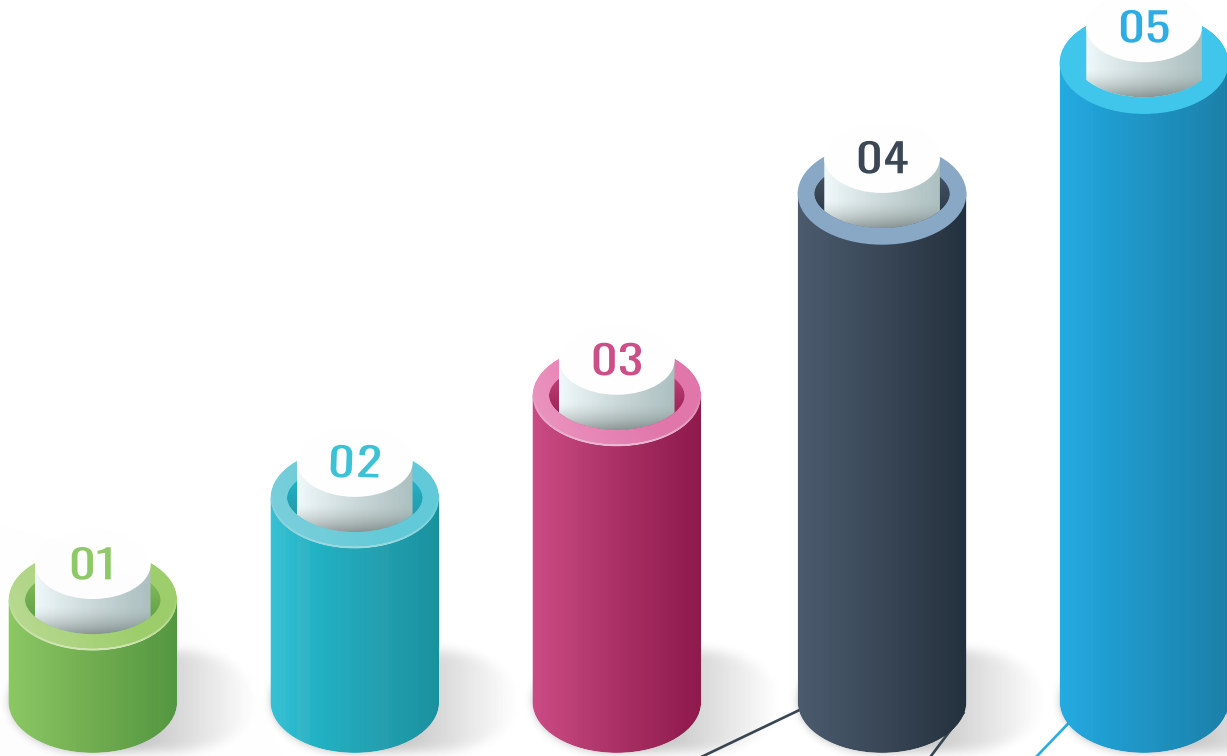


LONG RANGE



THERMAL SCAN





## GENERATION 4

### DATA ANALYTICS & MOBILITY

- Smart Analytics
- Smart-Sharing- API's
- User Friendly UX
- Non-IT Admin Support

## GENERATION 5

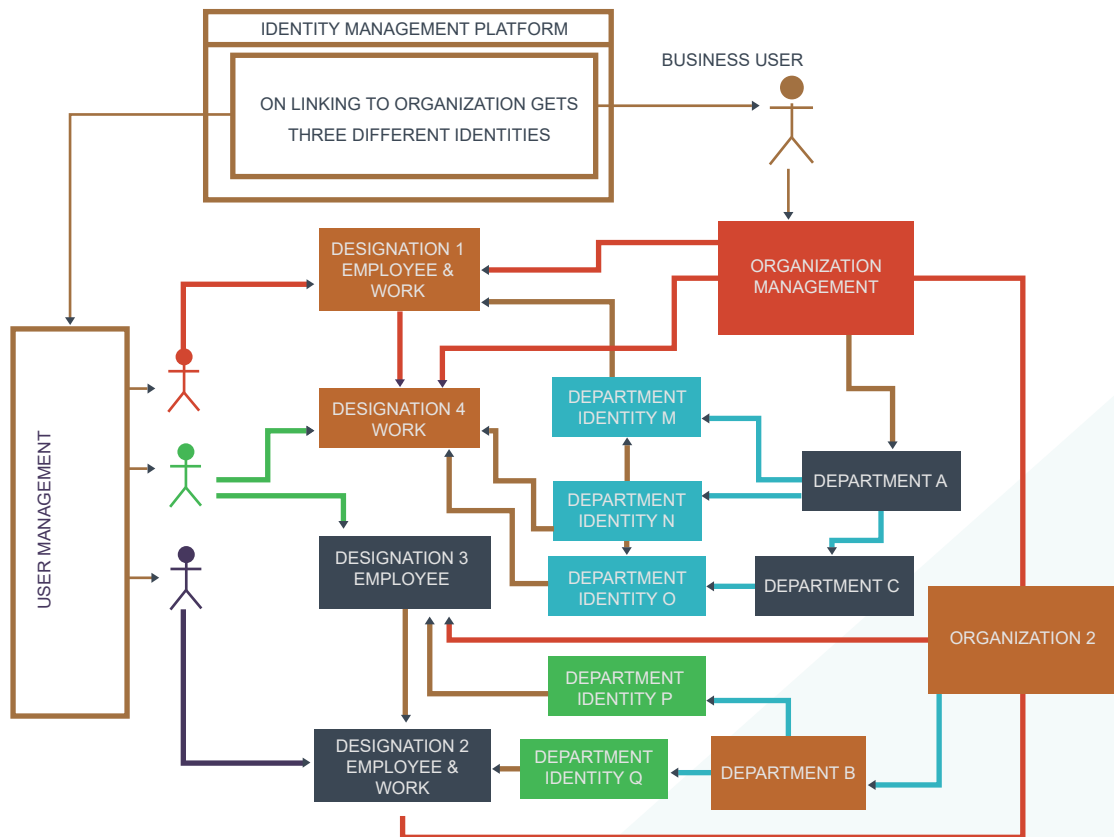
### DATA ANALYTICS & AI

- Cognitive Intelligence
- Dynamic Workload Indicators
- Dynamic Work Delegation
- Workload Balancing
- Mobility Apps with
- AHALTS Based IM
- Cognitive Asset Allocation

## THE SOLUTIONS

### Multi Identity Organization chart

- Organization identity ( Employment Identity )
- Department identity ( Work Identity )
- User identity ( IM for one click on boarding and off boarding )



### ORP ( Operational Resource planning )

- Cognitive Work planner and scheduler that balances
- Routing
- Workload based on variable demand
- Role and skill with Responsibility Management using Handover and takeover
- Location and Time logs for each activity
- Rules based activity start and stop
- Task/Milestones/Projects/Tickets/Service Request/meetings/calendar/drag and drop work organizer

## Roaster Setting

( AI driven shift suggestion for compliant shifts and activity based scheduling) Maximizing effective Work hours (optimizing shift hours vs daily activity hours)

## Workforce Cost control

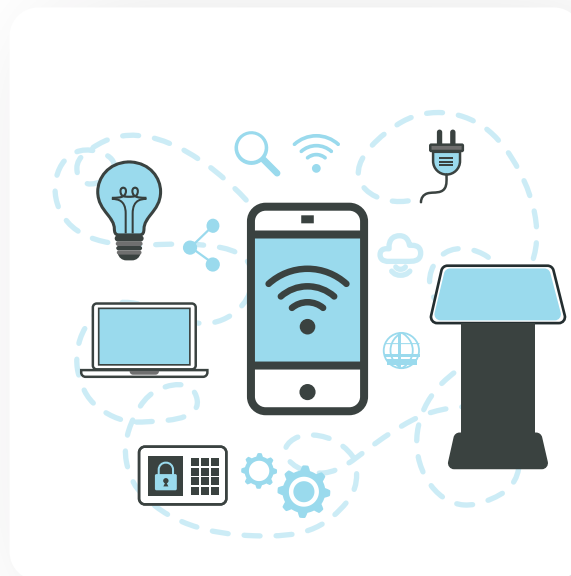
( AI driven employee grade, work grade and activity grade algorithm for optimal cost)  
Asset Management with IOT integration for asset tracking

## AHALTS Services (authentication of human and assets with Location and Time)

This is integrated into all activities with facial recognition with thermal scan to combat latest social challenges raised due to virus, Allows Work from anywhere. Touch less attendance using their Facial recognition devices that recognize the body temperature and mask on

Anywhere attendance using our mobile App which has a inbuilt (AHALTS )

- IOT Devices supported for Authentication/ Facial Recognition / Biometric
- Geo Location and Geo Fencing/ Manual punch/ Biometric Machines/ NFC



## THE BALANCER

SERP HR Analyzer : A Cognitive Controller to Automate or alert on imbalance in following

- Variable Work demand: Cognitive Automated rule based work activation based on demand factors role certification and efficiency metrics using Data Analytics and AI

- Variable Resource Location: Cognitive Alert on imbalance in employee location. Asset location and work location. Real time tracking
- Variable Manpower Availability: Cognitive shifting of work to best available employee balancing the workload in case of new demand or employee absenteeism or not tracked. Shift preferences, compliant shift hours
- Variable Manpower cost: Cognitive alert if work grade, organization grade and employee grade imbalanced, Cognitive Role and Skill Analyzer alerting employee Certification and training to optimize efficiency ( AI driven easy selection based on certification and historical performance data to shortlist the best talent).

Department Name	Dept Incharge Name	Responsible Name	Tuningerroelog
SECURITY	AS	RS	Superb manpower planing
ACCOUNTS	JCB	PRS	Low work allocation below 50%
FRONT OFFICE	VT	MKT	Task begin and end both mismatch to shiftin and shift end to poor work alocation below 25%
GENERAL MANAGER RAJ PALACE	ARJ	NS	Work hrs more than shift hours overload poor cost tuning employee loaded with low grade work tuning score 25%
GENERAL MANAGER RAJ PALACE	ARJ	NS	Task after shiftclose low work allocation below 50%

## SERP HR Tuning Index

- One score metrics based on all factors effecting Services effectiveness and Resources Planning for HR
- Cognitive Alerts and Notification tracked with real time scenarios
- KTS ( Key trigger switched to control all elastic boundaries of the Eco system

Tip Top SERP is a SOA Library of ready to run components that can be Customized or extended easily as per the business need. The flexible licensing allows businesses to choose right components for their business collaboration as per the need and manage IT needs



- Simple Facial Recognition Device without Temperature Scan
- Facial Recognition Device with Temperature Detection
- Facial Recognition Device with Mask on Detection
- Facial Recognition with Touch Screen
- Facial Recognition Device with Mask and Temperature Detection without Touch Screen
- Facial Recognition Device with Attendance and Small Dispenser
- Touch Screen Kiosk with Sanitizer Dispenser
- Touch Screen Kiosk with Sanitizer Dispenser, Facial Recognition, Temperature Scan and Printer
- Touch Screen Kiosk with Sanitizer Dispenser, Facial Recognition, Temperature Scan and Printer



## Multi-Protection Dispenser for Coronavirus (COVID-19) AIO

Imaging Thermography  
- (very accurate)

Automatic Dispensing  
Hand Sanitiser



15.6" Interactive  
Display

Mask Cabinet

Mask Dispenser

L: 640mm \* W: 360mm \* H: 640mm

Details:



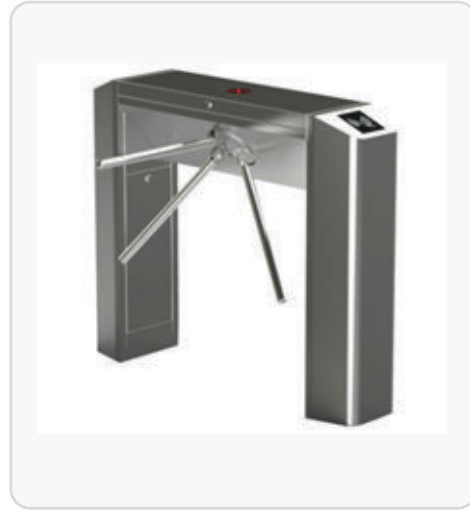




Vertical Tripod Turnstile



Bridge Type Vertical Tripod Turnstile



Bridge Type Tripod Turnstile



Single Motor Flap Turnstile



Double Motor Flap Turnstile



Single/Double Motor Flap Turnstile



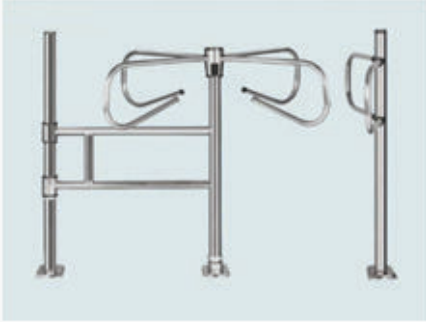
Single Motor Swing Turnstile



Double Motor Swing Turnstile



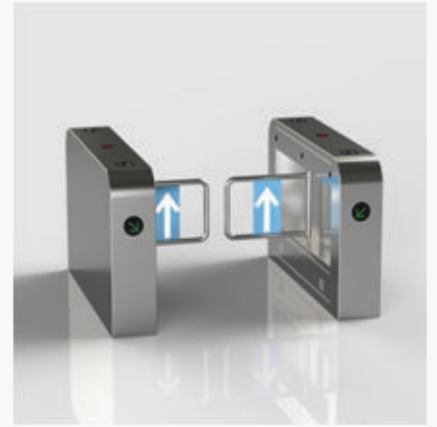
Single Motor Swing Turnstile



Supermarket Turnstile



Single Motor  
Swing Turnstile



Single Motor  
Swing Turnstile



Double Motor  
Swing Turnstile



Single Motor  
Swing Turnstile



Single Motor  
Swing Turnstile



Double Motor  
Swing Turnstile



High Speed Single  
Motor Turnstile



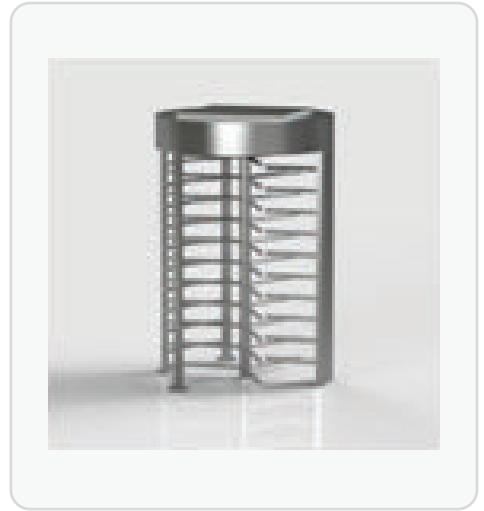
High Speed Double  
Motor Turnstile



Full Height Speed Single Motor Turnstile



Full Height Speed Double Motor Turnstile



Full Height Single Lane Turnstile



Full Height Double Lanes Turnstile



Full Height Tri Lanes Turnstile



Half Full Height Lane Turnstile



Drop Arm Single Motor Turnstile



Drop Arm Double Motor Turnstile



Double Motor Swing Turnstile

**FEATURES**

Intelligent Multi sensed cameras integrated with Thermal scans, Thermal imaging, Laser illumination, Optical system and other intelligent functions. Specially designed for 24/7 all-day, All-weather and all-purpose security monitoring.

**Security** - Non-contact temperature measurement, Reduce the risk of cross infection

**Efficient** - It is can detect multiple people at the same time, The detection time is less than 1 second

**Accuracy** - High-precision non-contact temperature measurement, Error less than  $\pm 0.3$  OC

**Intuitive** - High-resolution infrared imaging with large scenes, It is can accurately locks people who with abnormal body temperature

**Intelligent Dual Sensor** - Intelligent algorithm for visible camera system and thermal imaging camera system, Face detection, Accurate temperature measurement, Low false alarm

**Intelligent Alarm** - Support temperature threshold setting and automatic screening warning mechanism, Real-time alarm for abnormal body temperature.

**Full-Time Work** - 7 × 24 real-time rapid body temperature screening, Early warning intervention

**Traceability** - Combined with the software, it can trace back, Analyze and mine historical data

**Scalable** - Can be linked with the emergency command system to achieve rapid response and real-time processing

**Easy Deployment** - One set thermal camera and one ordinary PC can constitutes a small temperature measurement station, Supporting offline and online deployment

**Environmental Adaptability** - It can be applied to small scenes such as entrances, Stores, etc.

### Intelligent Multi Sensor Camera

This signature series of intelligent multi-sensor optical system consists thermal imaging, Visible imaging, Laser illumination and other intelligent functions. Specially designed for 24/7 all-day, All-weather and all-purpose security monitoring.



### Intelligent Dual Sensor Camera

This intelligent dual sensors optical system is developed on the basis of thermal imaging, Visible imaging and other intelligent functions. Specially designed for 24/7 all-day and all-weather monitoring, this device also come with build-in intelligent hot-point detection algorithm.



### Vehicle Mounted Camera

This camera is specially designed for vehicle mounted purposes, with its' highly vibration resistant that suitable for all-type of vehicle, Ship, tank etc. This dual sensor camera consists visible imaging and thermal imaging or laser illumination.



### Uncooled Thermal Imaging Camera

Designed based on the latest uncooled IR sensitive technology and continuously IR optical zoom function. The highly sensitivity 5th generation of FPA VOx sensor able to penetrate through haze/fog/rain/snow/dust and support for 24/7 all-day monitoring.

## Cooled Thermal Imaging Camera

Integrates with the latest generation of Cooled Focal Plane Array (FPA) MCT HgCdTe sensor which can observe longer range than other thermal imaging products. This device widely apply in special monitoring field because of it's' highly sensitivity and stability.



## Laser Imaging Camera

This signature device is an excellent night vision camera which developed with 100% own R&D and integrates with both HD visible imaging and IR laser illumination module. Our laser illumination technology enable the laser light penetrate through tinted window.



## Portable and Handheld Camera



## Heavy-Duty Vehicle Mounted Camera

With highly vibration resistant and full reinforcement structure design, This optical system integrates multi sensors (thermal imaging, Visible imaging and laser illumination) in one machine which applicable to all-day, All- weather and all-environment monitoring work.



## Intelligent Optical Platform

Intelligent Optical Platform is the signature intelligent photoelectrical platform designed and developed based on the military standard requirement. It integrates high-definition visible imaging camera, Cooled/uncooled infrared thermal imaging camera, Laser illumination, Auto-tracking module and precise U-Shape optical platform. It can automatically search or quickly and accurately capture, Track and identify low-altitude targets such as UAV under the guidance of radar/passive spectrum detection system. Thus, it provides the most direct visual guarantee for the radio interference and countermeasures system.



**TGT-ZSDN50-GII Series**

**AGT-TSTN50-GIII Series**

**TGT-DMA-II Series**

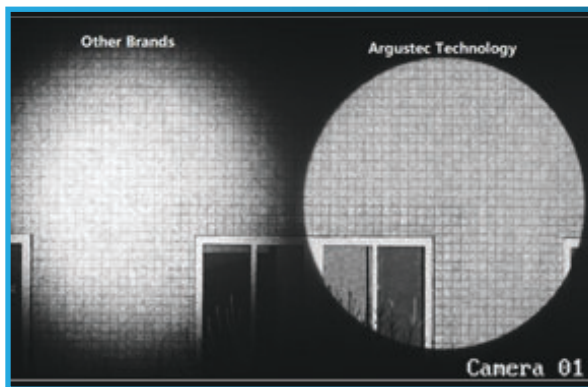
# Anti-UAV Auto-Defense System

On the basis of self-developed precise TGT-DMA and TGT-ZS series of optical platform system, With the deep integration of phased array radar detection system, passive spectrum detection system, radio countermeasures system, Navigation decoy jamming system, Fly-handpositioning subsystem and other equipment, Command and control through the self-developed Integrated Comprehensive Control Platform to form an advanced anti-UAV auto-defense system which integrates search, Detect, Control, Interference, Decoy and capture in one operation panel. This system has effectively guaranteed an all-day, Full-time and full-dimensional security at low-altitude in key areas.

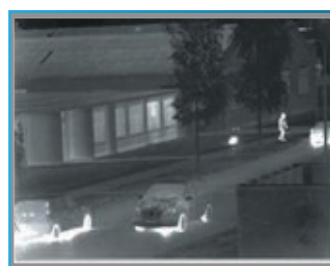
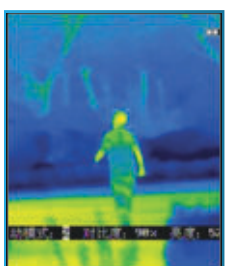


## Images Effects

Laser Imaging Effects :



Thermal Imaging Effects:





# CONTACT US

## TipTop Platform Pvt Ltd.

### Address

A-3, Sardar Patel Marg, C-scheme  
Jaipur-302001 (Rajasthan)

### Email

ankur@tiptopmail.com  
sales@tiptopmail.com

### Phone

+91 9829051543

### Website

[www.tiptopplanet.com](http://www.tiptopplanet.com)