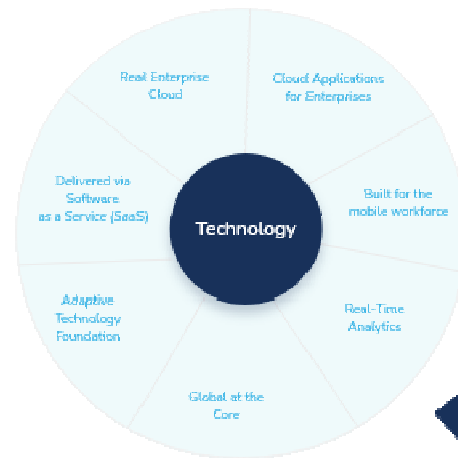




HRTECH ● FINTECH ● IDTECH ● IOT

BUILT ON ENTERPRISE

PLANNING PLATFORM



Break Open your organization's HR capabilities or enhance ERP performance with TipTop Planet.

Headquarter

A-3, Sardar Patel Marg,
C-Scheme, Jaipur-302001
(Rajasthan), INDIA

Mobile

+91 9314402000

Email

ankur@tiptopmail.com

Websites

www.tiptopplanet.com
www.ahaltspay.com www.ahalts.com
www.hrserp.com



TipTop Planet

Business Planning Platform with integrated advanced ID-Tech using Facial recognition & biometrics that deliver real time AI powered Cognitive secured and productive HRTECH & FINTECH unified solution for Enterprises .

Our payroll, time clocks with face id, activity monitor, workload balancer cloud applications are designed for the way people work in today's organizations.

Break opens your organization HR capabilities and performance with TipTop Planet. Its unique Workload Balancer AUTO tunes Rostering, scheduling and work delegation based on these factors Reducing Manpower cost by average 30%

“ I have started TipTop Planet to bring unique, advance intuitive solutions that can simplify and optimize HR Activities and People planning to synergize with enterprise plans so that work and activities can dynamically Balance and adapt to changing real time factors, we are committed to offering products and services through the business of enterprise applications that can fill the gaps left by legacy ERP solutions. ”

- Arun Puri
Founder of TipTop Planet

References

“ We implemented HRSERP systems for WISN in out two government hospitals. The result were astonishing as we achieved a saving of 27% per cent in Manpower cost just in 30 days of implementation . Its flexible time and attendance with IOT devices and Mobile app are a most useful feature for easing and making staff attendance and activity monitoring getting both efficiency and effectiveness to our organization ”

- Dr Sudhir Bhandari , Principal & controller SMS Medical Colleges

“ We have a Plastic recycling plant where we produce yarn for Global companies like IKEA etc. EDPL has a round the clock operation and a very erratic labor scheduled and we contacted TipTop to provide us Core HR with AHALTS to ease our Time and attendance with Payroll . They implemented a complete solution with cognitive shifts correction to handle our complex requirement working with just one of our HR staff without it is a amazing journey with them ”

Rajesh Aggarwal CEO EDPL Group



Why TipTop

- 01 **TipTop Platform** One unified platform that frees you from the clutter of multiple tools and applications to manage workforce Multi device , Multi location and Multi organizations, multi tenant API platform with Mobile APK, SDK and Application BUS
AHALTS ID-Tech Platform with Human tracking using Facial recognition Biometric, Geo Location, NFC
- 02 **Time & attendance Platform for Cognitive Audit for Accurate, compliant payroll—every time.**
HRSERP Enterprise planning simplified with integrated solution to Achieve Goals & Strategy plan by Delegating to right people with right skills at right time at right cost using our **Patented workload balancer to reduce your manpower cost by 30%**
- 03 **HRSERP Performance ratings** Help succession planning and more engaged employees by extracting automate Benefit and compensations along with actual employee profile score for increment or instant loan also employees insurance can be extended from the platform directly
- 04 **AHALTS PAY** Audited time flows seamlessly to payroll in real time, with hours worked, overtime, holidays and more calculated So that your workers get paid correctly and you stay in compliance.
Employee Self Service (ESS) with Travel and reimbursements using logged travel data like UBER and remote Bill submission and Pay slips directly from the mobile app
- 05

“ Kanha was working with many companies and the solutions were quite scattered we were really looking for an end to end complete solution that would do our attendance payroll, mobile workforce tracking and entire HR operations. TipTop was able to fulfill all our requirements with their HRSERP and AHALTS solutions ”

Punet Jethlia Director Kanha Group



AHALTS :ID-Tech with **A**uthentication of **H**umans and **A**ctivities with **L**ocation & **T**ime to defined **S**chedules is the most advanced AI powered service in the market today for Time, attendance and Activity

AHALTS 5th Generation AI powered Touch less Face ID Identity Management , Time tracking with Mobile App.

Our cloud based. AHALTS time and attendance system is fully integrated with HRSERP for Activity scheduling and monitoring . AI Audited time records directly flow into AHALTPAY for payroll solution, Managing schedules, hours worked and time off is critical for payroll accuracy and compliance. Time & Attendance solutions from Ahalts Clocks with face id makes it easier, it saves your time and prevent errors while single sign-on connects employees with the information they need across devices, locations, and services.

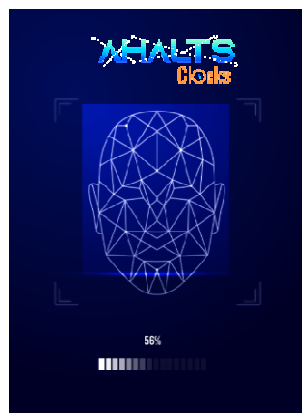
Features

- Multidimensional org chart allows internal and external users to be authenticated whereby Employees, contractual employees, visitors , customers can all be authenticated on same place for different schedules
- Advanced Face recognition Touch less Face id for secured Time and attendance, activity management
- Integrated with HRSERP for workforce Management and cognitive scheduling
- Location tracking for field workers and vehicles
- Time Tracking with Mobile App or IOT terminals integrated with access controls
- Most advanced ID-Tech for security and human identification using most accurate Face recognition and Biometric algorithms
- In Built KYC using government social identification or TipTop KYC services

Benefits

AHALTS helps organizations to optimize security and productivity by reducing labor costs, minimizing compliance risks and increase worker's productivity.

- Cognitive schedules for auto shift corrections
- Multiple Usage like visitor entry, contractual labor entry, online work form home monitoring
- API, SDK and APK for custom development
- Real time location tracking
- Reverse face scan for emergency information like knowing a persons health information
- KYC compliant
- People monitoring and identification
- Missing people identification
- VIP guest intimation
- Multi device ,Mobile ,web or IOT Devices
- Time approvals
- Real-time calculation
- Remote worker tracking with Patrol monitoring feature using NFC (very useful for government schemes like Aangan Badi and Manrega etc)
- Security layer for Banks transactions

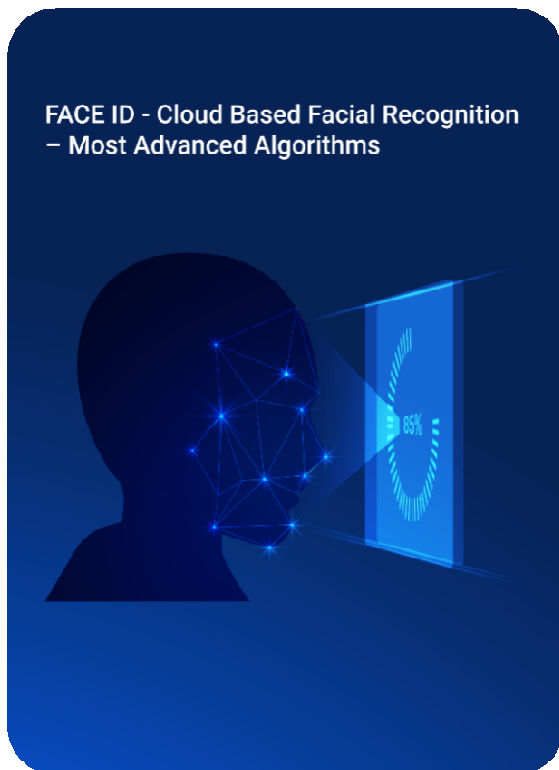


FACE ID - Cloud Based Facial Recognition

– Most Advanced Algorithms



AHALTS exact facial recognition algorithm and fast implementation ensure this is the ideal solution for Corporates and Governments.



Benefits

- Accurate: Industry Leading accuracy in real world applications
- Efficient: Read the world without waiting Online or offline
- Reliable: Built for high availability, Ahalts Face recognition is always on

Features

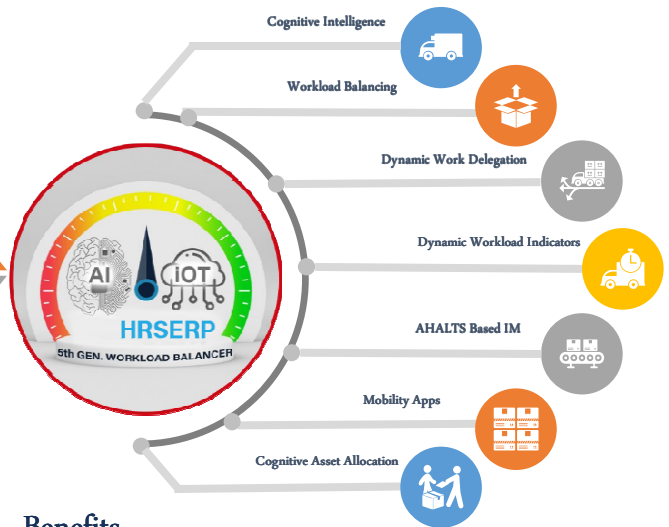
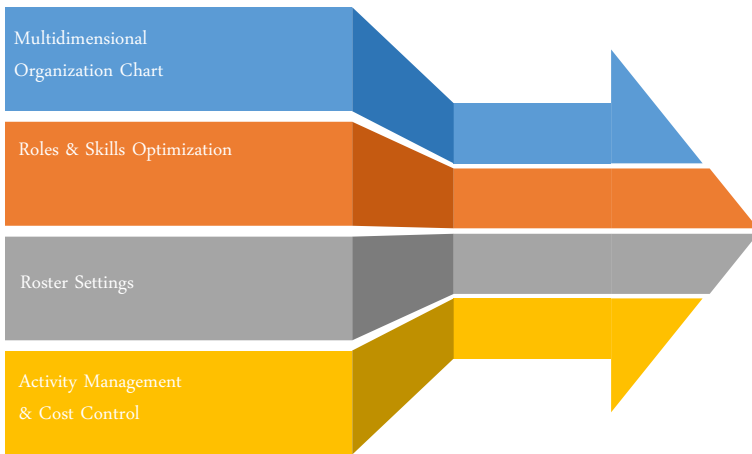
- Authentication (face ID, Living person Detection, Face search , Face comparison NFC,
- Human Identification (ID and profile management, Covid risk management, access control, vaccine Certification, KYC)
- Activities (Validate activities , Track Mobile workforce using Face id, Tracks Assets, Cognitive scheduling and Audit, ESS, IOT device integration
- Location: (Real Time Location Tracking, Geo location, Geo Fencing , NFC)
- Time (NTs, Global watch using UTC, Real Time Activity logging)
- Services (API, APK, SDK's)



HRSERP is the global enterprise application delivered in the cloud that unifies strategies, human resources, benefits, talent management.

HRSERP Enterprise planning simplified with integrated solution to Achieve Goals & Strategy plan by Delegating to right people with right skills at right time at right cost using our Patented workload balancer to reduce your manpower cost by 30%

HRSERP Performance ratings Help succession planning and more engaged employees by extracting automate Benefit and compensations along with actual employee profile score for increment or instant loan also employees insurance can be extended from the platform directly



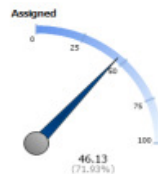
Features

- > Core HR : Payroll, Time and attendance with Face id, Workforce management (WM)
- > Employee communications, Benefits administration, Human resources information system.
- > Strategic HR: Core HR + Complete Strategic HRTECH solution with AI powered world's 1st workload balancer.

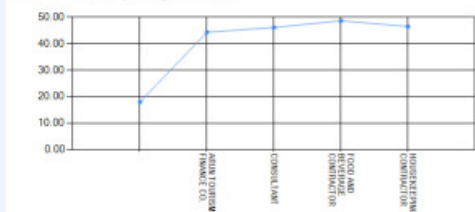
Benefits

- > Assign Work remotely
- > Tracks progress
- > Analyses workload of the entire organization
- > Performance Ratings
- > Cognitive Alerts and Notifications with real time Scenarios
- > Tools to define, manage and adjust benefits plans to meet your unique requirements
- > Key Trigger Switches (KTS)

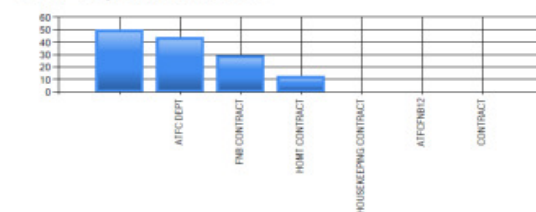
SERP HR Workforce Plan Score



SERP Company Score



SERP Department score





Complete Payroll Process Management

Set-up or upgrade your business with modern payroll, benefits, compliances , Loans and HR

It combines control, flexibility and insight to support the unique aspects of your organization's specific requirements

Features

- > Cognitive Time Sheets Audit Check
- > One click payroll processing with KYC and one click loans
- > Compensation, benefits & Taxation
- > Performance Linked Increment Tool
- > Compliances and instant insurance
- > Data analytics

Payroll

- > One Click Payroll Processing

Compensation and Taxation

- > Salary and Wage Computation, PF/ ESI Calculation
- > Allowance and Deduction Computation
- > Templates of Tax Slabs, Investments Salary Audit
- > Salary Lock system
- > Tax Calculation and TDS, Form 16 , Pay Slips, Tax Accounting
- > Payroll Adjustments and Arrears Handling

HR Services

- > Employee self Service online with Mobile App
- > Simple integration with business software, time tracking, HR systems and ERPs
- > End to End payroll processing



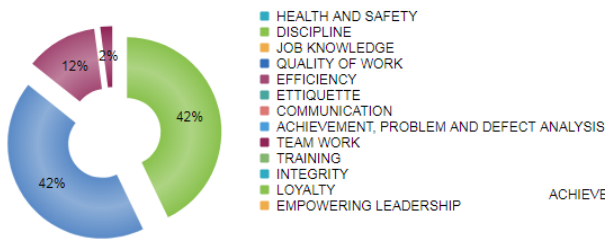
Rating based employee value Assessment for Benefits , Compensation, Insurance and Loans

Know your Stars and can be starts know your employee Risk for insurance selection as per the task they are doing, Get their integrity and loyalty score for loans and advances get their Performance ratings for Benefits , compensation and use our Cognitive Increment Tool for increment advise

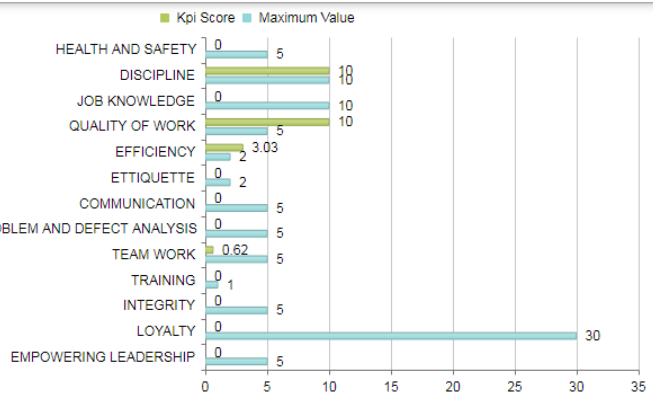
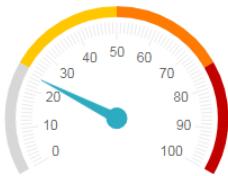
OVERALL PERFORMANCE SCORECARD

% Breakup

Kpi Score vs. Maximum Value



Total Score



Compliances & Instant Insurance

AHALTS Pay Work with licensed business insurance agents for property and casualty insurance, general liability insurance and more.

- > Workers Compensation Insurance
- > Business Owners Policy (BOP)
- > General Liability
- > Property and Casualty Insurance
- > Commercial Auto Insurance

Employee Benefits

In today's workplace, the health and safety of employees is a top priority. By integrating payroll with benefits, we make it easy to control costs, simplify administration, and protect them .

- > HSA, FSA & more benefits
- > Retirement Services
- > Loans for employee on salary

Empower your workforce for productivity with TipTop People Mobile app for real time smart work

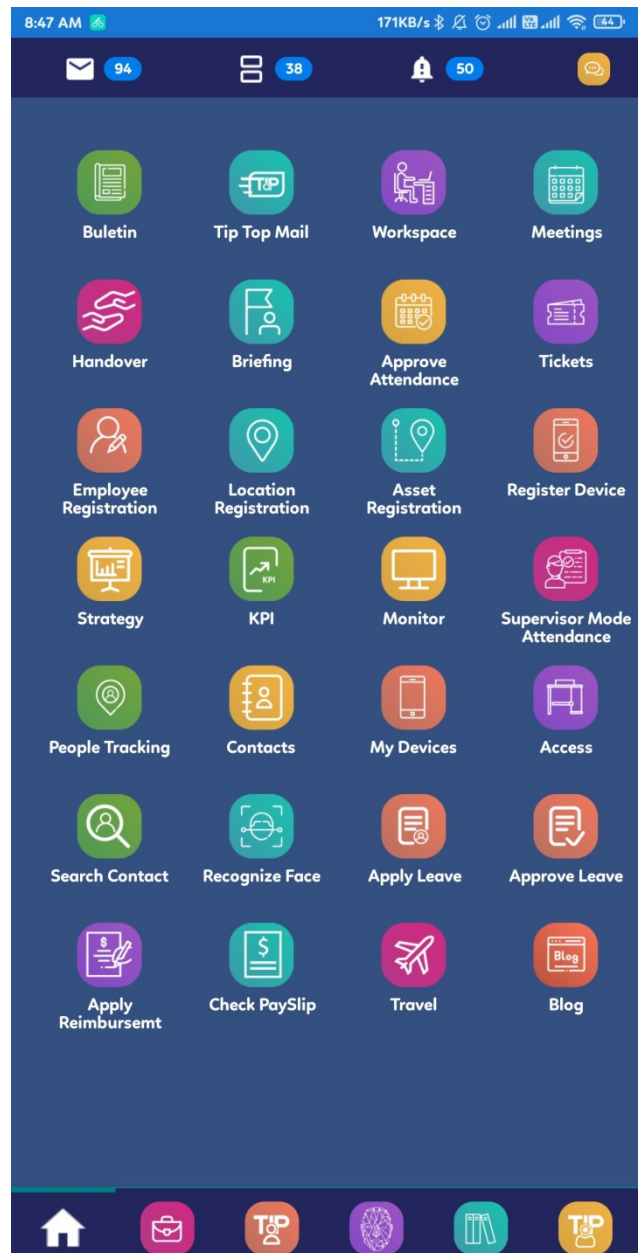
Integrated Mobile: One App for all TipTop Applications with Managers, Supervisor and user features all in one

Features

- > Attendance punching (Kiosk attendance/ supervisor mode/ employee mode)
- > Office Tools (Bulletin/ Meetings Workspace / Tiptop Mail)
- > Employee Self service
- > Payroll
- > Activity Management
- > Travel and Tracking
- > Reimbursements
- > Tracking Reverse face scan for profile search
- > Notifications
- > Dashboard
- > Complaint Management / Tickets
- > Monitor
- > Reports

Benefits

- > Low cost of ownership
- > One App for Application
- > Works as a Full suite with integrated ID-Tech AHALTS security
- > Tracks Mobile Workforce
- > Easy Work from anywhere
- > Full suite Features for complete daily working requirement including employee self service portal
- > Empowers workforce to stay connected 24 X 7 from any location
- > **Improves productivity and monitoring by 30%**



Unified Enterprise Cloud

Technology integration Platform unifying Business + IT

We started TipTop Platform with a very simple premise: We need a dynamic solution that can Balance the work load of employees breaking the Pareto law of 80:20 as people can perform better if they are better informed and rightly delegated work matching their skills, attitude, aptitude and capabilities. Using the latest AI and cognitive technologies, TipTop offers advantages that are not possible with current 3rd or 4th generation HR solutions .

TipTop Platform is built on Distributed SOA Architecture delivering a Robust API engine which has a decoupled design and all the functions are built as services that are embedded with Objective Pipelines and Business rule engines that can be used as independent service to combine into applications as custom user requirement .

Our low code development platform has ready API, SDK and APK for rapid custom development

- **Lower total cost of ownership** – With a cloud-delivery model, there is no hardware, software, middleware to buy, install or maintain. You can access Tip Top anytime, anywhere. We eliminate the cost and burden of managing underlying IT infrastructure and operations.
- You have control over your data with our hybrid data layer that accommodated on premise data or your data on cloud it makes it most secured and gives you freedom to manage your data the way you want
- **Ready to run for faster time to value** – TipTop deployments can start immediately and are delivered on time and on budget. Our applications are more cost-effective and faster to deploy than legacy applications.
- **Tenant Architecture ensures innovation and adoption** –Using the latest cloud technologies with hybrid data layer Tiptop offers advantages that are not possible with current cloud applications or on premise applications as they fail to meet te customer data control requirement .

- **Safety from the start** –TipTop is a trusted partner for many companies and best-known brands. TipTop maintains rigorous security in all aspects, from the physical network to the application and data levels.
- **Enterprise at its core** –TipTop has been built over a Multidimensional organizational structure where it allows a unified ID-Tech embedded at its core this allows the organizations to simulate their organizational structure without having actual employees linked to the organizational .

5th Generation cognitive and intuitive capabilities

'Tip Top platform' Services are Built over Neural Object framework that lays the foundation of AI and BI capabilities our ID-Tech with face recognition is most advanced application scenario of this technology in real time use cases taking activity automation to new levels

The Tiptop suite of applications includes SSO with Identity Management, Communication and collaboration, Authentication and authorization services, customized application development with low code, core HR, strategy HR , Benefits, Talent Management, Recruiting, Payroll and Time Tracking, facial recognition. It is unified integrations between applications and business processes that are cross-functional. Everyone has a consistent, personalized, real-time view and experience.

Designed for the Way organization Thinks and People work Engaging user experience

TipTop Applications looks and works like your any office application . With minimal training, all users can quickly adopt TipTop applications. From the first time they interact with TipTop, users can do what they need to do.

Built for the mobile workforce

TipTop mobile applications are optimized . You do not need a separate app for each business process. Instead, TipTop offers a single mobile experience which has all the major functions required for employees and supervisors including the real time face recognition and location tracking services .

Scalable and Adaptive Technology

TipTop is built on micro service architecture which allows you to start from any service like communication or collaboration to a full strategic HR solution with payroll , taxation, benefits , insurance , loans, IOT devices the possibilities are endless with us its only how far you want to go



Embedded, actionable, real-time analytics

TipTop provides a single, actionable view of your business, from people, performance to financials of your workforce. Workers can securely access insights when they need them, collaborate and take action – all without leaving tipTop. And with Insight Applications, you can use our data warehouse that is built on OGM framework so that all the data is directly linked to strategic initiatives , you can build a 3rd generation balance scorecard using TipTop data with information from non-Tiptop data sources to predict the outcomes of business scenarios and receive actionable recommendations

Disclaimer:

The information contained in this communication (including any attachment(s) hereto) (collectively, "Communication") is confidential, may be privileged, may constitute inside information, and is intended only for the use of the addressee. It is the property of TipTop Platform Pvt Ltd. and the intended recipient. Unauthorized use, disclosure or copying of this Communication or any part thereof is strictly prohibited and may be unlawful. If you have received this Communication in error, please notify us immediately by return e-mail, and destroy this Communication and all copies thereof.